



**FINAL ARTWORK AT 000%**

PLEASE NOTE: This is the artwork we print from.

Order Number:590366

Product Code: QB0011

Print Size:93\*60MM

Version: 1

Product Colour: PURPLE

Print Position: FRONT CENTRE

Max Print Area: 100mm x 60mm

Pantone:WHITE

Amendments to artwork supplied:

**Special Print Requirements:PLEASE NOTE :1 COLOUR ONLY ON THIS PRODUCT**

Any special print requirements must be advised at approval stage (However a new visual may have to be done and approved which may affect the lead time)  
We may at times advise you of our concerns with regards to the print or print colour on the PDF proof, if approval is given this is unfortunately at your own risk.  
If a photograph is required of the item this may be chargeable and this is quite often done on day of despatch and could delay your order if approval isn't received immediately.

70%



**PLEASE CHECK THE FOLLOWING INFORMATION IS CORRECT AND TICK ALL THE APPROPRIATE BOXES:**

I understand that this is the proof that is used by the printer when printing my order and as such it supersedes any other documents regarding my order.  
By signing this proof I accept responsibility for errors which have not been corrected after proof approval.

Quantity ☐

Spelling ☐

Position ☐

Print Colour ☐

Print Area ☐

Print Name: .....

**APPROVED :) ☐**

**NOT APPROVED :( ☐**

Signed: .....

Date: .....

We cannot accept liability for errors, however caused, which are evident in the proof and not indicated by you at this stage. You are liable for all relevant costs incurred in correcting such mistakes once the proof has been approved. The following checklist may assist (the list is not exhaustive!) text colour, cut marks, layout, size/shape, spelling, typography, marks & other imperfections. Please note: Your order will not go into production until this proof is approved in writing. This product may have more than one print area, please check to ensure the print position is correct as mistakes cannot be rectified once the goods have been printed. If you are increasing the amount of prints or position to what is showing on your order acknowledgement additional charges will apply. The visual is not designed to be an accurate representation of the actual product or print. It is primarily to depict the desired logo for size and positional checking and sign off. Due to the nature of the materials used in the manufacturing and printing processes, we can not guarantee a perfect pantone colour match. However, we will endeavour to match your desired pantone 'C' colour as closely as possible. Please be aware that the ink won't have a gloss finish and as a general rule printed colours appear darker when printed onto darker coloured products. A products texture can also have an effect on the final appearance and colour of the print. If the printed colour and quality is critical then we would always recommend a printed sample.

## Artwork Approval

Date: \_\_\_\_\_

Order Number: \_\_\_\_\_

Product Code: **QB0011**

Print Size: \_\_\_\_\_

Version: 1

Product Colour: **PURPLE**

Print Position: **CENTRAL ON LID**

Max Print Area: **100mm x 80mm**

Pantone: \_\_\_\_\_

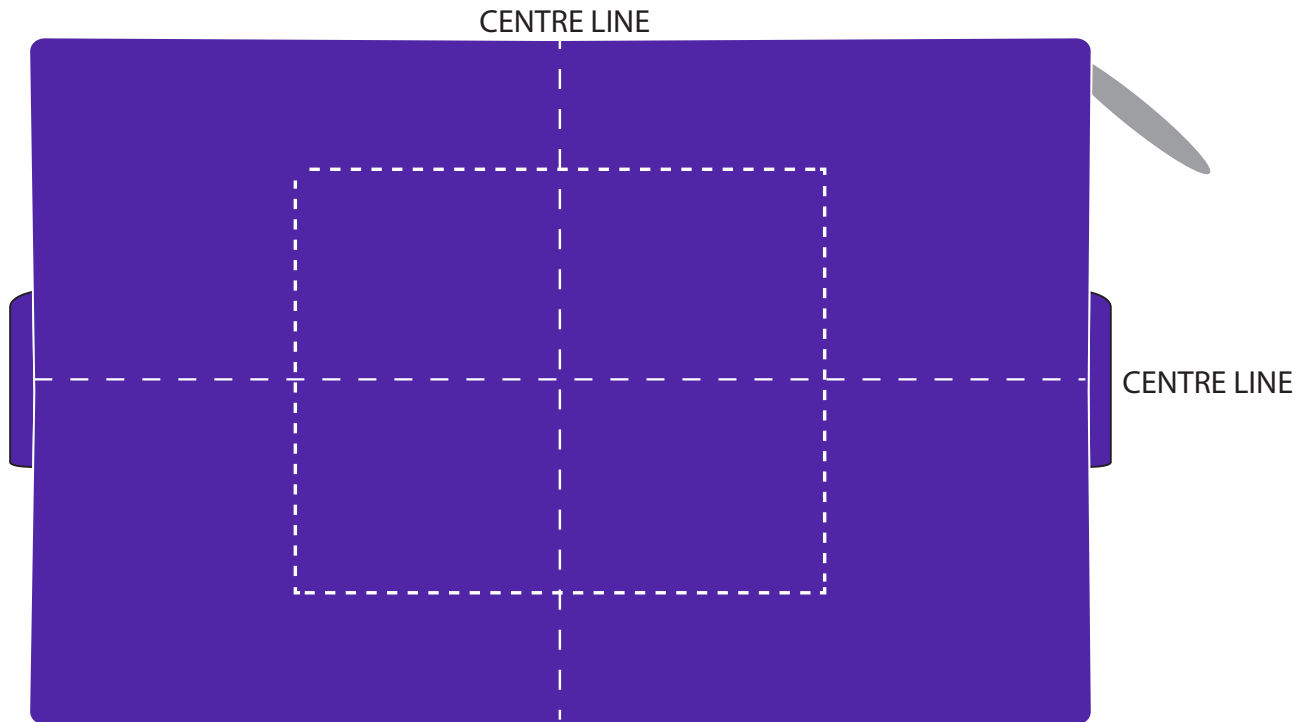
Amendments to artwork supplied:

**Special Print Requirements: PLEASE NOTE :1 COLOUR ONLY ON THIS PRODUCT**

Any special print requirements must be advised at approval stage (However a new visual may have to be done and approved which may affect the lead time)  
We may at times advise you of our concerns with regards to the print or print colour on the PDF proof, if approval is given this is unfortunately at your own risk.  
If a photograph is required of the item this may be chargeable and this is quite often done on day of despatch and could delay your order if approval isn't received immediately.

PLEASE NOTE - PAGE 2 OF 3

70%



**PLEASE CHECK THE FOLLOWING INFORMATION IS CORRECT AND TICK **ALL** THE APPROPRIATE BOXES:**

I understand that this is the proof that is used by the printer when printing my order and as such it supersedes any other documents regarding my order.

By signing this proof I accept responsibility for errors which have not been corrected after proof approval.

**Quantity** ☐

**Spelling** ☐

**Position** ☐

**Print Colour** ☐

**Print Area** ☐

Print Name: \_\_\_\_\_

**APPROVED :) ☐**

**NOT APPROVED :( ☐**

Signed: \_\_\_\_\_

Date: \_\_\_\_\_

We cannot accept liability for errors, however caused, which are evident in the proof and not indicated by you at this stage. You are liable for all relevant costs incurred in correcting such mistakes once the proof has been approved. The following checklist may assist (the list is not exhaustive!) text colour, cut marks, layout, size/shape, spelling, typography, marks & other imperfections. Please note: Your order will not go into production until this proof is approved in writing. This product may have more than one print area, please check to ensure the print position is correct as mistakes cannot be rectified once the goods have been printed. If you are increasing the amount of prints or position to what is showing on your order acknowledgement additional charges will apply. The visual is not designed to be an accurate representation of the actual product or print. It is primarily to depict the desired logo for size and positional checking and sign off. Due to the nature of the materials used in the manufacturing and printing processes, we can not guarantee a perfect pantone colour match. However, we will endeavour to match your desired pantone 'C' colour as closely as possible. Please be aware that the ink won't have a gloss finish and as a general rule printed colours appear darker when printed onto darker coloured products. A products texture can also have an effect on the final appearance and colour of the print. If the printed colour and quality is critical then we would always recommend a printed sample.