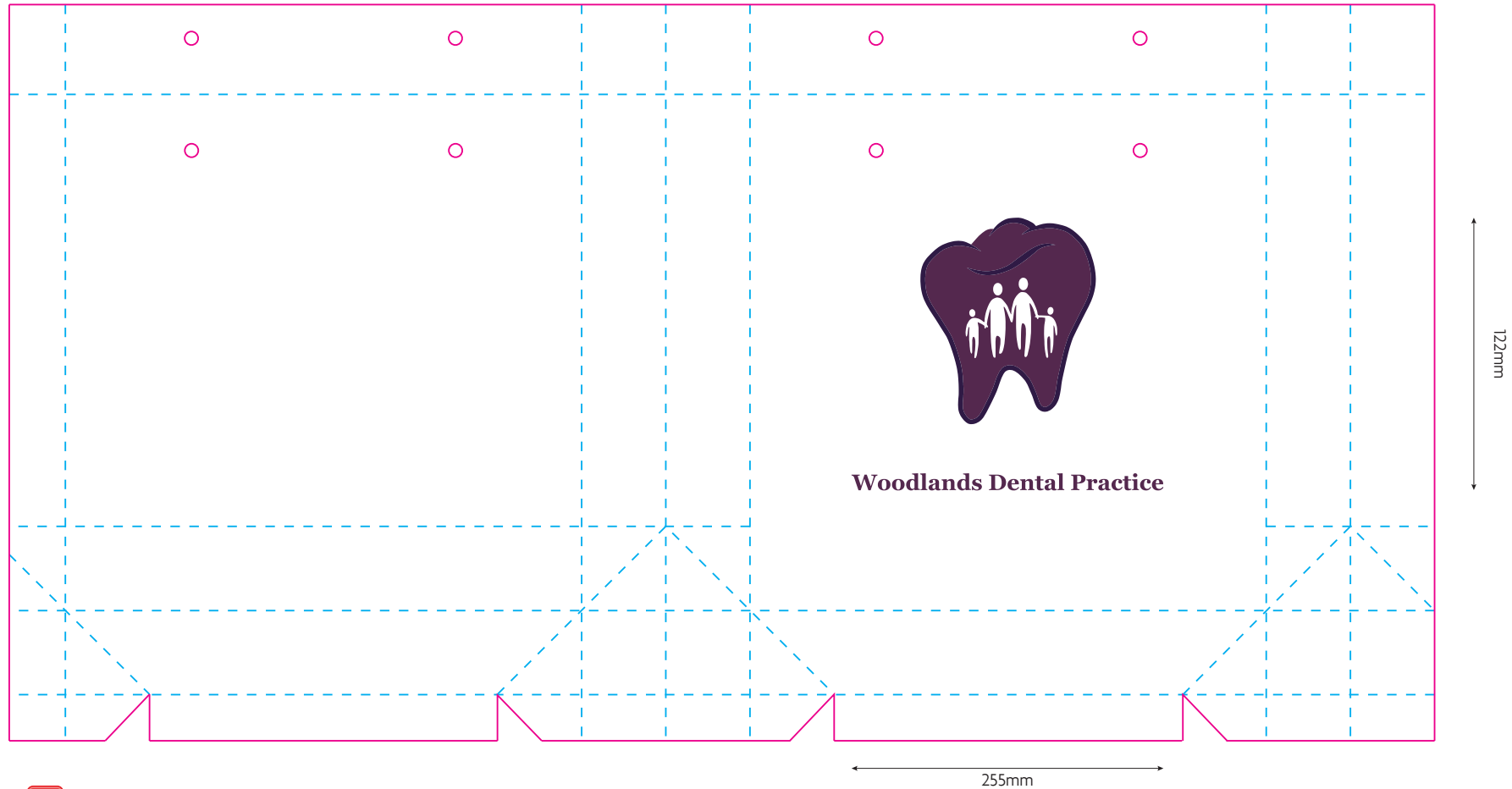


**REF:** REDE02-27679\_v0.1\_TM  
**DATE:** 15 - 10 - 2015  
**SPEC:** Matt Laminated Bag (H230 W230 G75) Printed 2 Colours to 1 Side



— Cutter Guide  
 - - - Folding Guide



Please note: Very fine or intricate artwork may be prone to filling in.

Print Colours:

PANTONE 2695 C  
 PANTONE 262 C

Lamination:

MATT LAMINATED

Rope Colour:

WHITE

No further work can be approved. To avoid delays in production please fax proof for approval on day of receipt.

Check your proof carefully. The proof has been prepared to allow you the opportunity to check for errors and mistakes, both yours and ours.

Colours are as per the PMS references stated, not as they appear on your computer's monitor. Computer monitors are not Pantone/CMYK accurate and colours can differ from one monitor to another.

We will proceed with production on receipt of your approval and we cannot accept liability for errors, however caused, which are evident in the proof and not indicated by you at this stage.

You are liable for all relevant costs incurred in correcting such mistakes once the proof has been approved.

In the absence of a specified PMS reference, colours shown within this proof cannot be guaranteed to match the physical product or print.



- Product model and colours are correct
- All colours are correct as stated
- All fonts are correct
- Artwork is set to the correct size

To approve artwork please print, sign and return via fax.

Signed..... Date.....

**REF:** REDE02-27679\_v0.1\_TM  
**DATE:** 15 - 10 - 2015  
**SPEC:** Matt Laminated Bag (H230 W230 G75) Printed 2 Colours to 1 Side

