

45%



Print Size: 225mm in width and 180mm in height.

Please see page 2 for logo artwork at 100% scale.

Artwork Proof:

Branding: NYX
Order Ref: 275181
Product: B8801 (black)
Origination Date: 18/02/2020

Print method: Screen print
Printed Colour/s to match:
☐ White

- Due to the variety of materials/production processes used during printing, we cannot guarantee a full pantone match, however we will endeavour to match as closely as possible to specified colours.
- As a result of the constraints of textile printing, we can only use 'uncoated' ink, therefore your pantone reference will need to be a 'u' code.
- If you are expecting coated ink ('c' code) please double check the pantone colour against an uncoated pantone book before approving the artwork as coated ink will differ in colour to uncoated ink.
- The colour and texture of a product can have an effect on the final print colour.
- Where ink colour is critical, please request a printed sample to ensure colour accuracy.

45%



Print Size: 220mm in width and 220mm in height.

Please see page 2 for logo artwork at 100% scale.

Artwork Proof:

Branding: NYX
Order Ref: 275181
Product: B8801 (black)
Origination Date: 18/02/2020

Print method: uv print
Printed Colour/s to match:
☐ 4 Col Process
(please note coloured borders, close to the bag colour maybe added to artwork to assist adhesion of fine print / detail).

- Due to the variety of materials/production processes used during printing, we cannot guarantee a full pantone match, however we will endeavour to match as closely as possible to specified colours.
- As a result of the constraints 4 Colour Process printing, we will match as closely as possible to Process Coated Pantone References, therefore your pantone reference will need to be a 'CP' code. If you are expecting anything other than this please double check the pantone colour against a Process Coated pantone book before approving the artwork as Process colours will differ from spot colours.
- The colour and texture of a product can have an effect on the final print colour.
- Where ink colour is critical, please request a printed sample to ensure colour accuracy.

NYX

HOTEL LONDON HOLBORN

by Leonardo Hotels

Print Size: 225mm in width and 180mm in height.

Final artwork at 1:1 scale (100%). Please note: this is the artwork we print from for production.

Please be advised:

- This visual is not designed to be an accurate representation of the colour of the actual product - it is primarily to depict the desired logo for size, positional checking and sign off.
- We always recommend that your customer views a plain sample prior to purchase as we cannot be held responsible if the colour of the product is not as expected once the order has been completed.
- The print colour on our PDF's are not designed to be used as an accurate representation of how the print colour will look on the finished product. This visual will vary in colour from screen to screen - please refer to appropriate pantone book.
- We cannot be held responsible if the print colour is not as expected for the reasons mentioned on page 1.
- We print to a 5mm alignment tolerance, this allows for discrepancies in product production and manual positioning of our products within the print process.

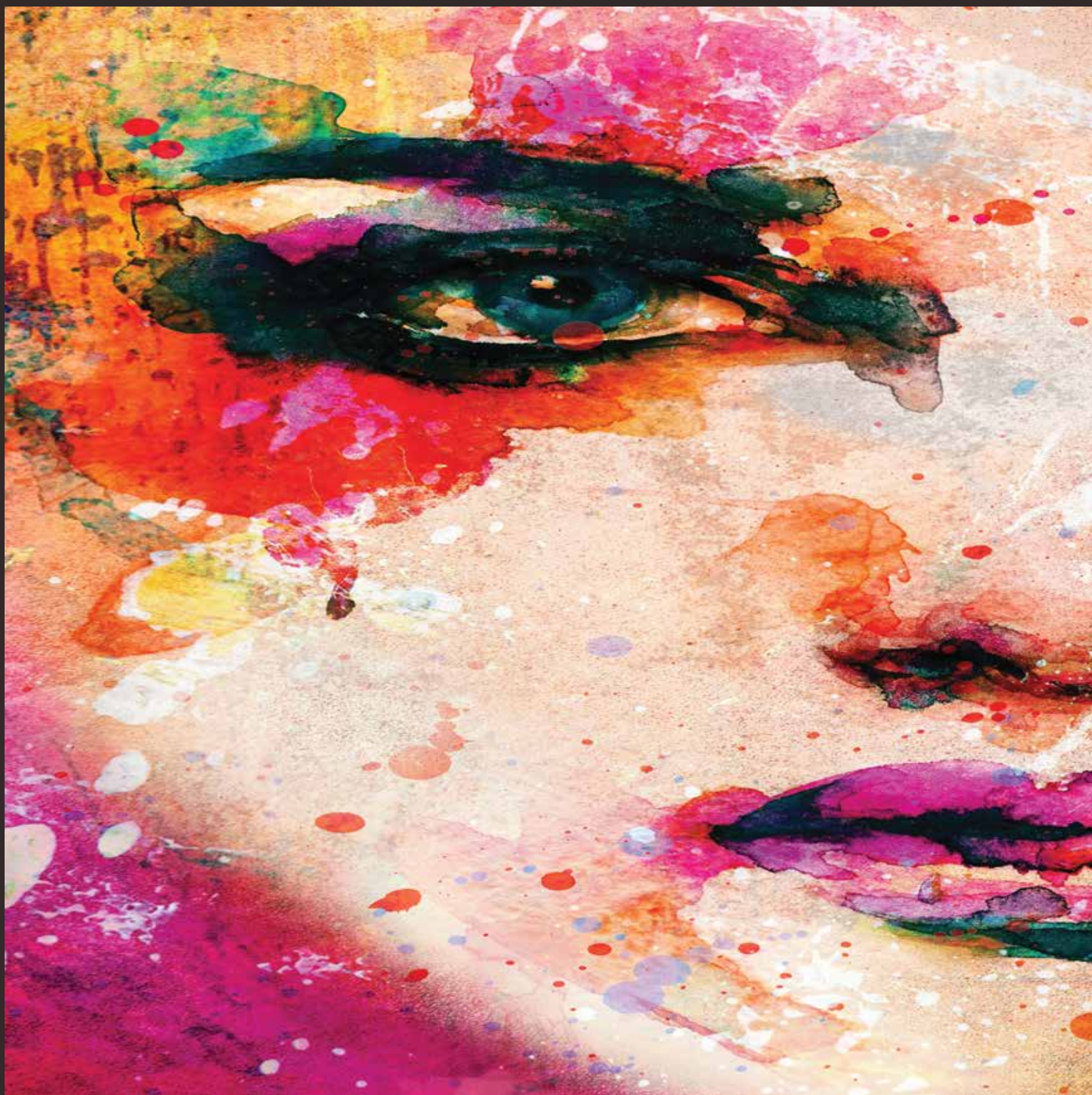
Have you checked...

By approving this visual you are confirming the following details are correct:

- Size of artwork
- Logo position
- Print colour/s
- Text and spelling

Please Note: Any delays with artwork approval may result in delays with production and despatch.

Your approval signifies that you accept responsibility for any errors once approval is received.



Print Size: 220mm in width and 220mm in height.

Final artwork at 1:1 scale (100%). Please note: this is the artwork we print from for production.

Please be advised:

- This visual is not designed to be an accurate representation of the colour of the actual product - it is primarily to depict the desired logo for size, positional checking and sign off.
- We always recommend that your customer views a plain sample prior to purchase as we cannot be held responsible if the colour of the product is not as expected once the order has been completed.
- The print colour on our PDF's are not designed to be used as an accurate representation of how the print colour will look on the finished product. This visual will vary in colour from screen to screen - please refer to appropriate pantone book.
- We cannot be held responsible if the print colour is not as expected for the reasons mentioned on page 1.
- We print to a 5mm alignment tolerance, this allows for discrepancies in product production and manual positioning of our products within the print process.

Have you checked...

By approving this visual you are confirming the following details are correct:

- Size of artwork
- Logo position
- Print colour/s
- Text and spelling

Please Note: Any delays with artwork approval may result in delays with production and despatch.

Your approval signifies that you accept responsibility for any errors once approval is received.